



Group photo of those who partook a Life Saving Skills Essential Obstetric and Newborn Care course in Swaziland.



Royal College of
Obstetricians and
Gynaecologists

— IN PARTNERSHIP WITH —
Liverpool School of Tropical Medicine
Liverpool Associates in Tropical Health

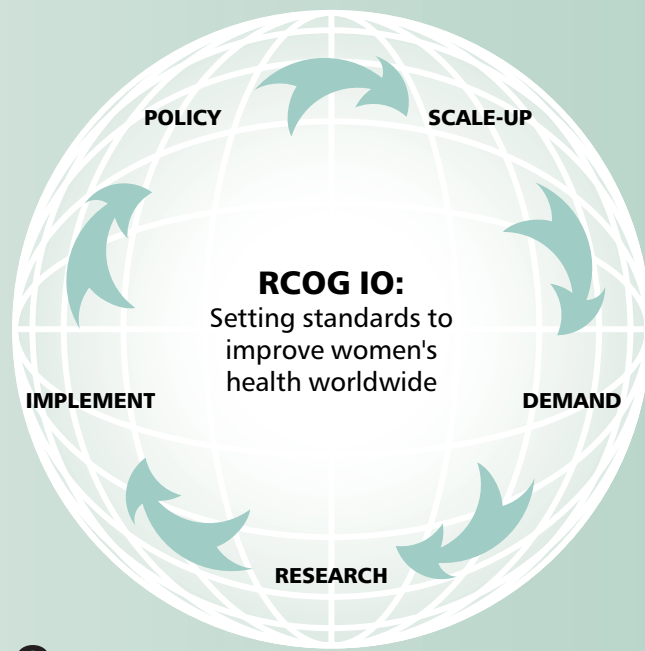
27 Sussex Place, Regent's Park
London NW1 4RG

Telephone: +44 (0) 20 7772 6200
Facsimile: +44 (0) 20 7723 0575
Website: www.rcog.org.uk

REGISTERED CHARITY NO: 213280



Life Saving Skills Essential Obstetric and Newborn Care Course



COURSE MANUAL

- Structured around the leading causes of maternal mortality and the delivery of basic and comprehensive essential (emergency) obstetric and newborn care.
- Comprises ten modules (same modules as in the course):
 - ❖ Communication, triage and referral
 - ❖ Resuscitation of mother and care of the newborn
 - ❖ Shock and the unconscious patient
 - ❖ Severe pre-eclampsia and eclampsia
 - ❖ Haemorrhage
 - ❖ Obstructed labour
 - ❖ Sepsis
 - ❖ Assisted delivery
 - ❖ Complications of abortion
 - ❖ Other common obstetric emergencies.
- The manual is useful for any healthcare provider, especially those working in resource-poor settings, trying to save lives in sometimes very difficult situations (including midwives, clinical officers, medical assistants and doctors).

THE COURSE

Participants are trained in saving lives of women and the newborn through:

- proper management of the major causes of maternal mortality in resource-poor settings
- delivery of basic and comprehensive essential obstetric care.

Basic emergency obstetric care (BEOC) consists of six key functions:

- being able to provide intravenous or intramuscular antibiotics
- being able to provide intravenous or intramuscular oxytocic drugs
- being able to provide intravenous or intramuscular anticonvulsants
- manual removal of placenta
- removal of retained products of conception (manual vacuum aspiration)
- assisted vaginal delivery.

Comprehensive emergency obstetric care (CEOC) consists of all the above functions plus the ability to provide:

- caesarean section
- blood transfusion.

To ensure its maximum effectiveness, the course is designed to:

Be deliverable: It is 2–3 days' duration only, so as not to have a prolonged period of time away from the workplace for either participants or facilitators.

Be educationally sound: It covers all types of learner – a combination of lectures, skills teaching, scenarios, discussions, workshops and demonstrations are used to deliver the course.

Enhance local collaboration: The course is delivered in-country with participation of local partner associations and ministry of health.

Be supportive: Twice-daily facilitator meetings are held to discuss progress of participants. Mentoring takes place throughout the course, with allocated time for discussion between mentors and mentees.

Have an effective target audience: Advice is taken locally to ensure that participants are selected to achieve maximum impact. It is intended that both 'hands on'

healthcare providers and those in management positions are involved.

Be sustainable: A 'training of trainers' (TOT) course is offered after each course to selected participants who will become facilitators to deliver future courses locally.

Promote retention of learned interventions: A series of wall charts will be available to complement the course materials which can be used in the workplace to guide clinical management.

Audit of effectiveness is an integral part of course delivery.

For further information please contact:

Mrs Sue Cain
Liverpool School of Tropical Medicine
Pembroke Place
Liverpool L5 3QA
Phone: +44 (0)151 705 3301
Email: suecain@liverpool.ac.uk

OR

Mrs Binta Patel
Royal College of Obstetricians and Gynaecologists
27 Sussex Place
Regent's Park
London NW1 4RG
Phone: +44 (0)20 7772 6223
Email: bpatel@rcog.org.uk

OVERVIEW

Name of the course:

Life Saving Skills – Essential Obstetric and Newborn Care course

Duration:

3 days (or programme adapted to local need)

Course content:

Ten modules which cover the major causes of maternal death in under-resourced countries (haemorrhage, sepsis, eclampsia and severe pre-eclampsia, obstructed labour and complications of abortion) and essential newborn care.

Method of delivery:

Adheres to the principles of adult learning by including different methods of learning to cover all types of learners – lectures, skills teaching, scenarios, discussions, workshops and demonstrations. Constructive feedback is given to participants during small group work.

Supporting documents:

Course manual: Course content and course manual are entirely complementary.
Facilitator guide: Lectures, breakout sessions, discussions and demonstrations are standardised and documented in written facilitator guide.